

## Electronic Concentrate Management System



*The system offers fast and easy changeover between two on-board concentrate cells. Available on FoamPro's 2000 series and the 3012 system.*

### Features & Benefits:

- Simple change between concentrate cells
- Patented programming allows dual calibration
- Automatic flush cycle
- Increased flow capabilities
- No air connections
- Control module displays performance information for both cells



# Electronic Concentrate Management System

## SPECIFICATIONS

### Integrated Design

#### Simplified for Great Performance!

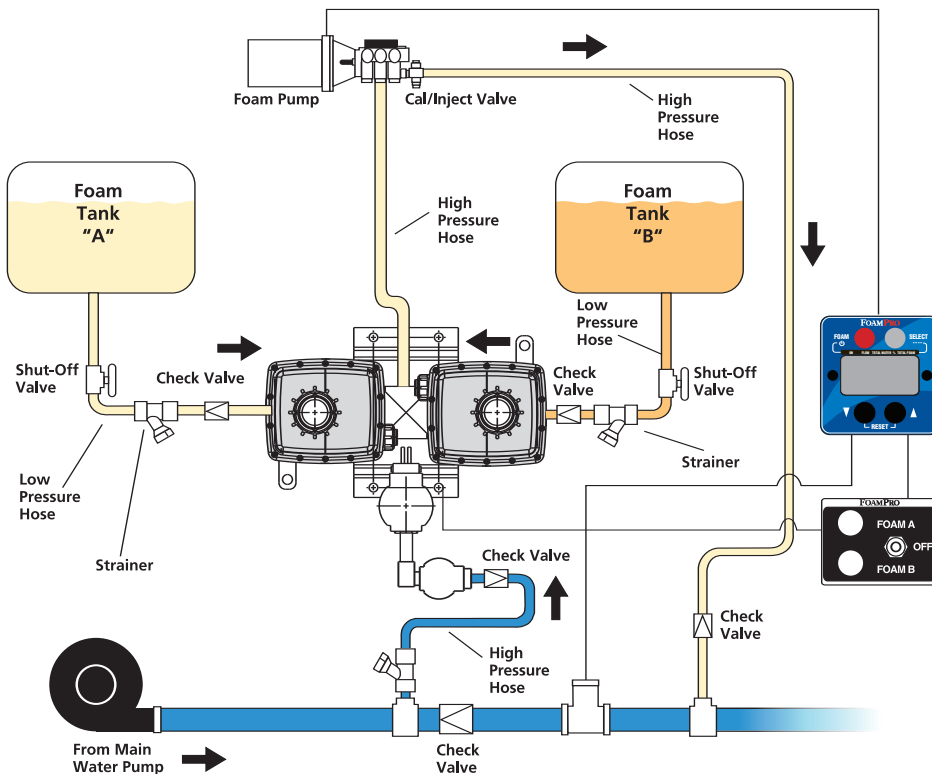
This add-on valve assembly offers the operator a simple method of choosing between two on-board concentrate cells. The activation of the panel-mounted switch routes the selected concentrate to the proportioner. The ultra-bright indicator lights provide visual confirmation of cell selection.

To assure accuracy, the patented main control module interface provides a calibration mode for each concentrate. The module also computes and displays performance data on each concentrate including: current water flow, total water used, total concentrate used and injection percentage. In addition, it warns the operator of low-tank conditions and simplifies operations by offering default injection percentages for each concentrate. When changing between cells, the system automatically runs a flush cycle to prevent cross-contamination.



Kit includes: solenoid-operated valve assembly, electric ball valves, panel placard with switch & lights, check valves, dual-tank electronics module, strainers and control interface cable.

#### System Diagram



**HYPRO**  
Pentair Water

375 Fifth Avenue NW • New Brighton, MN 55112  
Phone: (651) 766-6300 • 800-533-9511 • Fax: (651) 766-6614  
[www.foampro.com](http://www.foampro.com)